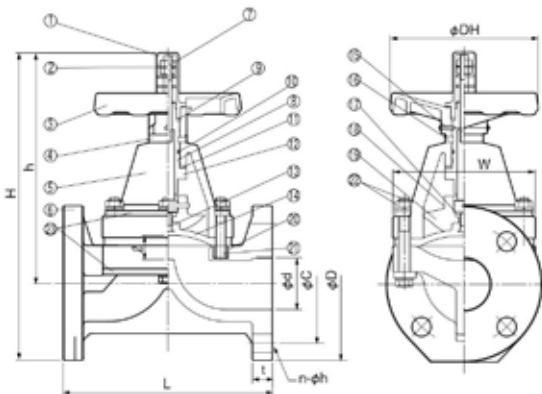




- Excellent sealing performance with optimized diaphragm design even by low handle operating torque.
- Improved diaphragm in compression set steadily prevents leakage.
- Available customized version for the applications in high temperature.
- Visual indicator at the handle top for open-close position and prevention of over tightening.
- Drip-proof and dust-proof mechanism for prevention of entering water and dust in bonnet.
- Flat at the bottom of flange and insert nuts for prevention of tumbling and for better workability in plumbing.

## Flange Type



## Parts List

No.	Part Name	Q'ty	Material	No.	Part Name	Q'ty	Material
①	Indicator Cover	1	PC	⑭	Diaphragm	1	EPDM, PTFE, PTFE+PVDF
②	Indicator	1	SUS304	⑮	Lock Pin for 32~250A	2	SUS304
③	Handle	1	ABS	⑯	Stem Set	1	PP or PVC
④	Collar	1	PE	⑰	Wetted Fittings for Compressor	1	C3604 or Ti-Pd
⑤	Bonnet	1	PVC, HT, PP, GFPP, PVDF	⑱	Lock Pin for Compressor	1	SUS304 or Ti-Pd
⑥	Body	1	PVC, HT, PP or PVDF	⑲	Compressor	1	15~150A GF-PP 200, 250A FCD
⑦	Indicator Stud Bolt	1	SUS304	⑳	Insert Nut	-	C3604, SUS304
⑧	Stem Sleeve	1	C3604	㉑	Stud Bolt	-	SUS304
⑨	Stem Packing	1	NBR	㉒	Bolt & Nut	-	SUS304
⑩	O-ring	1	NBR	㉓	Reinforcement Plate for HT, PP, PVDF	1	SUS304 or SS400 Painted by Epoxy Resin
⑪	Thrust Washer	1	PTFE, SUJ				
⑫	Stem Spindle	1	C3604				
⑬	Insert Bolt	EPDM	1	Cr Plated SS			
		PTFE	1	SUS304 or Ti-Pd			

- Quantity of ㉒-㉓ bolts & nuts differ depending on size of valve.
- ⑮ Lock pin for handle is not attached for the sizes up to 25A.
- ㉓ Reinforcement plate is attached to HT, PP, and PVDF type.

## Size

Size		d	L	H	h	DH	W	ℓ	Flange (JIS 10K)				Weight (kg/pc)				Q'ty per Carton
A	B								φD	φC	n-φh	t	PVC	HT	PP	PVDF	
15	1/2	16	110	166	119	80	76	10	95	70	4-15	14	0.9	1.1	0.8	1.1	8
20	3/4	20	120	180	130	80	82	12	100	75	4-15	14	1.0	1.3	1.0	1.3	8
25	1	25	130	195	133	80	90	15	125	90	4-19	14	1.4	1.7	1.3	1.7	8
32	1 1/4	41	180	269	199	125	122	20	140	100	4-19	16	2.6	3.3	2.5	3.4	2
40	1 1/2	41	180	269	199	125	122	20	140	105	4-19	16	2.6	3.3	2.5	3.4	2
50	2	52	210	308	230	148	142	27	155	120	4-19	20	3.6	4.5	3.4	4.8	2
65	2 1/2	67	250	379	291	210	170	36	175	140	4-19	22	6.2	7.7	5.9	8.4	2
80	3	80	280	415	322	210	202	37	185	150	8-19	22	8.2	9.6	7.9	11.2	2
100	4	100	340	497	392	260	255	61	210	175	8-19	24	13.8	18.3	15.4	21.1	1
125	5	125	410	560	435	350	320	61	250	210	8-23	24	21.8	-	20.0	26.0	1
150	6	150	480	630	490	350	375	70	280	240	8-23	26	26.3	-	25.5	36.0	1
200	8	198	570	790	632	410	416	96	330	290	12-23	29	51.0	-	44.0	61.0	1
250	10	248	680	980	780	555	540	132	400	355	12-25	31	93.0	-	77.0	108.0	1

- Bolt hole dimensions on flange conform to JIS B2220.
- Flange dimension of 32A is same as 40A, but long bolt hole on the flange.

### Important Notes

Fluid containing slurry, solid, sediment, or crystallized fluid might disable sealing.

## Usable Liquid Temperature & Maximum Working Pressure

Material	Usable Temperature (°C)	max. Working Pressure at Room Temp (MPa)							
		EPDM				PTFE			
		15~100A	125~150A	200A	250A	15~100A	125A	150A	200~250A
PVC	0~60	1.0	0.8	0.5	0.45	1.0	0.7	0.5	0.4
HT	0~90	1.0	-	-	-	1.0	-	-	-
PP	0~90	1.0	0.8	0.5	0.45	1.0	0.7	0.5	0.4
PVDF	0~120	1.0	0.8	0.5	0.45	1.0	0.7	0.5	0.4

## Conforming Standard

Connection	Standard	Classification
Flange	JIS10K	JIS B 2220
	ANSI	ANSI B16.5
	DIN/ISO	DIN EN 1092-1 PN-10
Socket	JIS	JIS K 6743, AS21(65A)
	ASTM	ASTM D2467
Thread	DIN/ISO	DIN8063
	JIS	JIS B 0203
Butt	DIN/ISO	DIN8077 (PP)
		ISO10931 (PVDF)

• For flange, dimension of bolt holes conforming the standards